



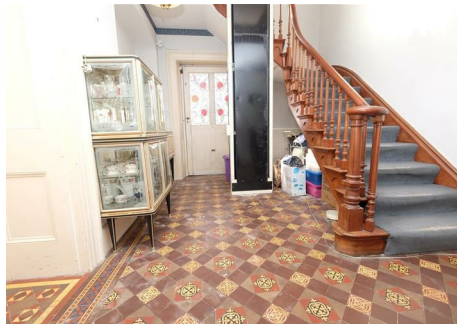
0117 973 6565

www.hollismorgan.co.uk

post@hollismorgan.co.uk

hollis
morgan

auction



Sunnybank House, Sparrow Hill, Coleford, Gloucestershire, GL16 8AS

Auction Guide Price £265,000 +++

Hollis Morgan *** RECORD BREAKING JULY AUCTION - OVER £15M SOLD! ***A charming Freehold DETACHED FAMILY HOME (2976 Sq Ft) with SOUTH WEST FACING GARDEN and now in need of UPDATING but with HUGE POTENTIAL.

ADDRESS

Sunnybank House, Sparrow Hill, Coleford, GL16 8AS

FOR SALE BY LIVE ONLINE AUCTION

*** SOLD BY AUCTION ***

GUIDE £245,000 +++

SOLD @ £265,000

Lot Number 47

The Live Online Auction is on Wednesday 29th July at 18:00

The sale will be streamlined LIVE ONLINE and you can BID by telephone, proxy or via your computer with your unique bidding PIN.

Registration is a simple 3 step process – download the online auction buyers guide for further details

Or simply email bid@hollismorgan.co.uk

PRE AUCTION OFFERS

Some properties may be available to buy prior to the auction.

Pre auction offers can only be submitted by completing the OFFER FORM which can be downloaded with the online legal pack - please email the COMPLETED form to – olly@hollismorgan.co.uk.

Please note offers will not be considered until the COMPLETE LEGAL PACK has been released.

You will be emailed a note to confirm the AUCTION PACK NOW COMPLETE and then offers can be submitted.

In the event of an offer being accepted the property will only be removed from the auction and viewings stopped once contracts have successfully EXCHANGED subject to the standard auction terms and payment of the buyer's premium (£1,200) to Hollis Morgan. Contracts can be signed either via the solicitors or at the Hollis Morgan offices subject to appointment.

VIEWINGS

Viewings can be booked on specific days for this property – please submit a viewing request online and we will contact you to arrange access.

Hollis Morgan would be grateful if you could arrive promptly to inspect the properties at the START of the agreed time as we have scheduled viewings throughout the day and CANNOT wait for late arrivals.

There are likely to be viewings on the property before and after your appointment and if you miss your slot (usually 15 minutes or longer for larger properties) you will be asked to wait until the next available time.

Please note government regulation on groups sizes and safe social distancing must be practiced at all times – please bring your own gloves and facemask.

You may be asked to wait outside before it is safe to

enter – please understand and respect this request.

If you have shown any symptoms of Covid (19) in the last 10 days we would respectfully ask you to not attend the viewing.

The safety of our clients and staff is our number one priority and we thank you for your understanding.

Please note that hard copy of details will not be provided but will have been emailed to you with instructions on how to bid and what happens next before the viewing.

EXTENDED COMPLETION

Completion is set for 8 weeks or earlier subject to mutual consent.

SOLICITORS

Leanne Higgins

Gwyn James Solicitors

15 Church Street

Monmouth

NP25 3BX

01600 775950

leanne.higgins@gwynjames.co.uk

ONLINE LEGAL PACKS

LEGAL PACK COMPLETE

Digital Copies of the Online legal pack can be downloaded Free of Charge.

Please visit the Hollis Morgan Website and select the chosen lot from our Current Auction List.

Follow the RED link to "Download Legal Packs" For the first visit you will be required to register simply with your email and a password.

Having set up your account you can download legal packs or if they are not yet available they will automatically be sent to you when we receive them.

You will be automatically updated by email if any new information is added.

There will be a note added to the list to confirm AUCTION PACK NOW COMPLETE when no further information is due to be added.

*** STAY UPDATED *** By registering for the legal pack we can ensure you are kept updated on any changes to this Lot in the build up to the sale.

THE PROPERTY

This imposing house (2976 Sq FT) is believed to date from the late 17th century when it comprised three separate properties – the imposing front façade is believed to be a much later addition.

Set in a large garden the property enjoys a south west aspect with views from the upper windows over the picturesque town of Coleford.

There is a new modern double garage (long leasehold) with parking for three cars on the forecourt immediately in front of the up and over door. (please note the purpose built flat above is in separate ownership). offered for sale with vacant possession.

ACCOMMODATION SCHEDULE

Spacious Ground floor rooms comprise Hall, lounge, dining room, sitting room, kitchen, utility areas, shower room and conservatory.

The next two floors offer five bedrooms, two bathrooms, study and disused kitchen.

LOCATION

Coleford is a bustling and picturesque town in the popular Forest of Dean area with its magnificent historic woodlands providing leisure opportunities such as walking cycling and use of the steam railway and visits to disused mines. Chepstow is within easy travelling distance connecting with the M4 motorway and thus providing connections to Newport, Cardiff and Bristol via the first Severn Bridge.

THE OPPORTUNITY

FAMILY HOME FOR UPDATING

The property is now in need of updating but would make a fine home in this elevated and sought after location.

CONVERSION TO FLATS

We understand there is scope to convert the property into flats.

NEW BUILD DEVELOPMENT

Buyers will note the adjacent new build developments and the plot may offer some development potential for a similar scheme.

*** All above subject to gaining the necessary consents

EPC

For full details of the EPC please refer to the online legal pack.

BUYER'S PREMIUM

Please be aware all purchasers are subject to a £1000 + VAT (£1,200 inc VAT) buyer's premium which is ALWAYS payable upon exchange of contracts whether the sale is concluded before, during or after the auction date.

GUIDE PRICE

An indication of the seller's current minimum acceptable price at auction. The guide price or range of guide prices is given to assist consumers in deciding whether or not to pursue a purchase. It is usual, but not always the case, that a provisional reserve range is agreed between the seller and the auctioneer at the start of marketing. As the reserve is not fixed at this stage and can be adjusted by the seller at any time up to the day of the auction in the light of interest shown during the marketing period, a

guide price is issued. This guide price can be shown in the form of a minimum and maximum price range within which an acceptable sale price (reserve) would fall, or as a single price figure within 10% of which the minimum acceptable price (reserve) would fall. A guide price is different to a reserve price (see separate definition). Both the guide price and the reserve price can be subject to change up to and including the day of the auction.

RESERVE PRICE

The seller's minimum acceptable price at auction and the figure below which the auctioneer cannot sell. The reserve price is not disclosed and remains confidential between the seller and the auctioneer. Both the guide price and the reserve price can be subject to change up to and including the day of the auction.

SURVEYS AND VALUATIONS

If you would like to arrange a survey or mortgage valuation of this Lot BEFORE the auction please instruct your appointed surveyor to contact Hollis Morgan and we will arrange access for them to inspect the property. Please note that buyers CANNOT attend the surveys and the surveyors are responsible for collecting and returning keys to the Hollis Morgan offices in Clifton.

AUCTION BUYERS GUIDE VIDEO

We have short video guides for both buying and selling by Public Auction on the Hollis Morgan Website. If you have any further questions regarding the process please don't hesitate to contact Auction HQ.

WHY HOLLIS MORGAN?

Hollis Morgan hold the largest land & property auctions in the region.

Hollis Morgan sold more £££'s of Land & Property in both 2018 & 2019 than any other auctioneer in the region.

In fact, no auctioneer has sold more than Hollis Morgan since 2010 with over £289m of sales - £95m more than anyone else.

Hollis Morgan was the most successful Auctioneer in Bristol & North Somerset during 2018 – 2019 with an 87 % success rate.

*Source EIG – Sales in BS and GL postcodes by agents based in BS or GL postcodes.

*Source EIG – Sales in BS postcodes 2018 & 2019 by agents based in BS

TESTIMONIALS

We are very proud of what our past clients have say about us - please visit the Hollis Morgan website to read their testimonials.

CHARITY OF THE YEAR

Hollis Morgan are supporting Bristol Charity All Aboard

Watersports as our 2020 Charity of the year with 5% of each Buyers premium being donated.

All Aboard Watersports strive to make it possible for everyone in the local community to join in a range of watersports and water related activities for people with physical, emotional or cognitive disabilities in the historic Bristol City Docks - www.allaboardwatersports.co.uk

In 2019 we were delighted to have raised well £10k for Bristol Zoo by supporting their Bear Wood Project at the Wild Place through events including the Hollis Morgan Opera Picnic and hosting their annual Gala Evening.

Visit the Hollis Morgan Charity page of our Website for further details - www.hollismorgan.co.uk/charity

AUCTION PROPERTY DETAILS DISCLAIMER

Hollis Morgan endeavour to make our sales details clear, accurate and reliable in line with the Consumer Protection from Unfair Trading Regulations 2008 but they should not be relied on as statements or representations of fact and they do not constitute any part of an offer or contract. All Hollis Morgan references to planning, tenants, boundaries, potential development, tenure etc is to be superseded by the information contained in the legal pack. It should not be assumed that this property has all the necessary Planning, Building Regulation or other consents. Any services, appliances and heating system(s) listed have not been checked or tested. Please note that in some instances the photographs may have been taken using a wide angle lens. The seller does not make any representation or give any warranty in relation to the property and we have no authority to do so on behalf of the seller.